



**PlanningPME**  
Schedule easily



# TARGET SKILLS PlanningPME

---

## Installation Guide

This document describes the installation of the software PlanningPME.



Copyright © 2002-2008 TARGET SKILLS. All rights reserved.

TARGET SKILLS believes the information in this publication is accurate as of its publication date. The information is subject to change without notice.

THE INFORMATION IN THIS PUBLICATION IS PROVIDED "AS IS". TARGET SKILLS MAKES NO REPRESENTATIONS OR WARRANTIES OF ANY KIND WITH RESPECT TO THE INFORMATION IN THIS PUBLICATION AND SPECIFICALLY DISCLAIMS IMPLIED WARRANTIES OF MERCHANTABILITY OR FITNESS FOR A PARTICULAR PURPOSE. No part of this publication may be reproduced, transmitted, transcribed, stored in a retrieval system or translated into any language in any form or by any means without the written permission of TARGET SKILLS.

PlanningPME is a trademark of TARGET SKILLS.

MySQL is a trademark of MySQL AB.

Oracle® is a trademark of Oracle Corporation

SQL Server and Access are trademarks of MICROSOFT Corporation.

## Table of contents

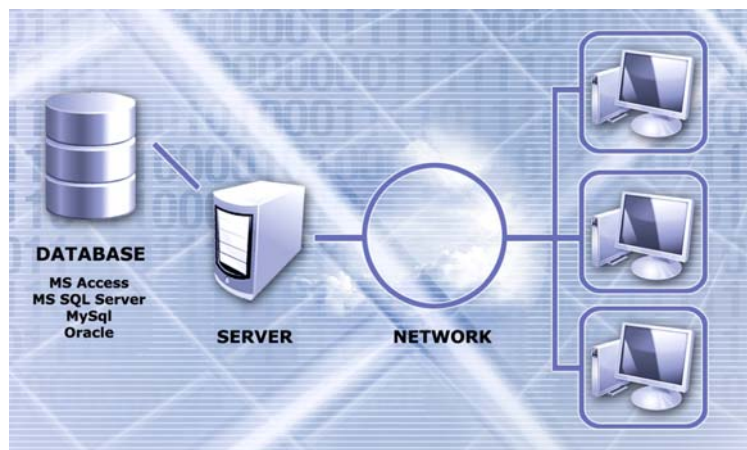
<b>I. Introduction .....</b>	<b>3</b>
<b>II. Required configuration .....</b>	<b>3</b>
<b>III. Installation .....</b>	<b>4</b>
<b>IV. Network installation on MS Access .....</b>	<b>6</b>
<b>V. Installation on MS SQL Server.....</b>	<b>8</b>
<b>VI. Installation on MySQL .....</b>	<b>9</b>
<b>VII. Installation on Oracle .....</b>	<b>10</b>
<b>VIII. Configuration of PlanningPME .....</b>	<b>11</b>
<b>IX. Back up of the planning .....</b>	<b>12</b>
<b>X. Contact .....</b>	<b>13</b>

## I. Introduction

Target Skills thanks you for choosing the software PlanningPME to manage your human and material resources.

This document describes all the steps necessary to come to a working installation of PlanningPME.

## II. Required configuration



### Minimum Required configuration

Pentium 266 Mhz

32 Mo RAM minimum

Windows 95, 98, 2000, NT, XP.

### Supported operating systems

Microsoft® Windows® 98

Microsoft® Windows® Millenium

Microsoft® Windows® 2000

Microsoft® Windows® XP

Microsoft® Windows® Vista

### Supported databases

Microsoft Access

MS SQL Server: version 7.0, 2000, 2005, Express Edition

MySQL: version 4.0 to 5.0

Oracle: version 8i, 9i, 10i

### III. Installation

The application PlanningPME is available under 2 formats:

#### Download

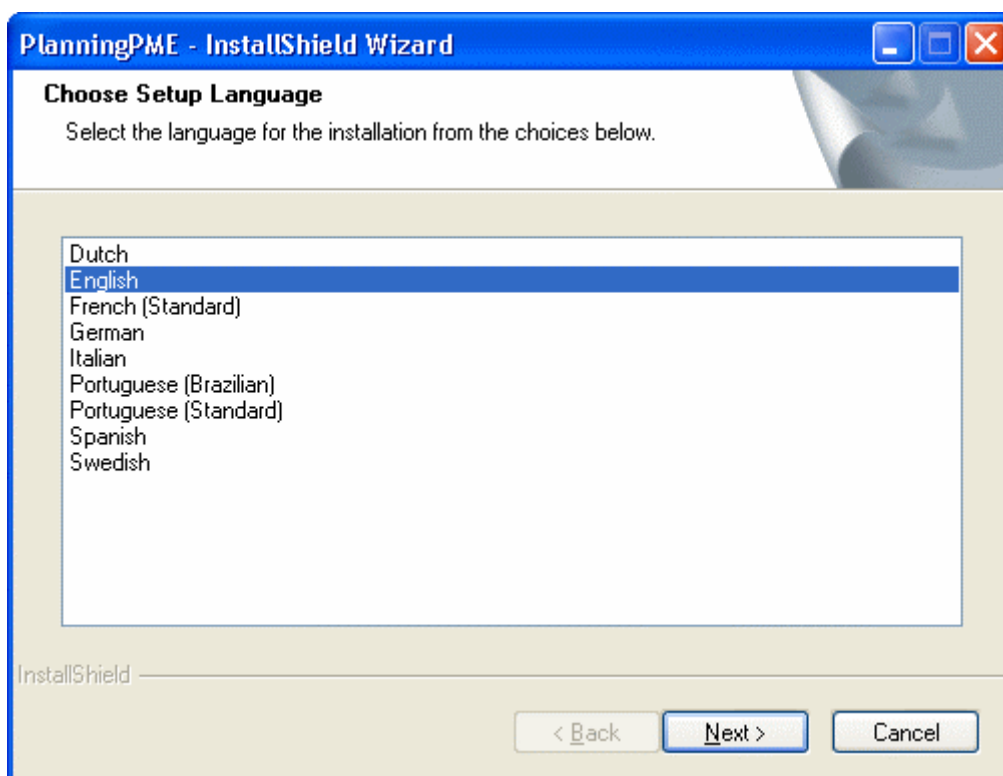
- Download PlanningPME from our website: you will be given a code during the installation. If you haven't got the code, we suggest you to contact your PlanningPME agent.

#### CD-ROM

- Installation of PlanningPME from the CD-ROM: The installation should start automatically. Otherwise, open the Explorer, go to the CD-ROM PlanningPME and double click on the file "install.exe".

#### Steps of the installation:

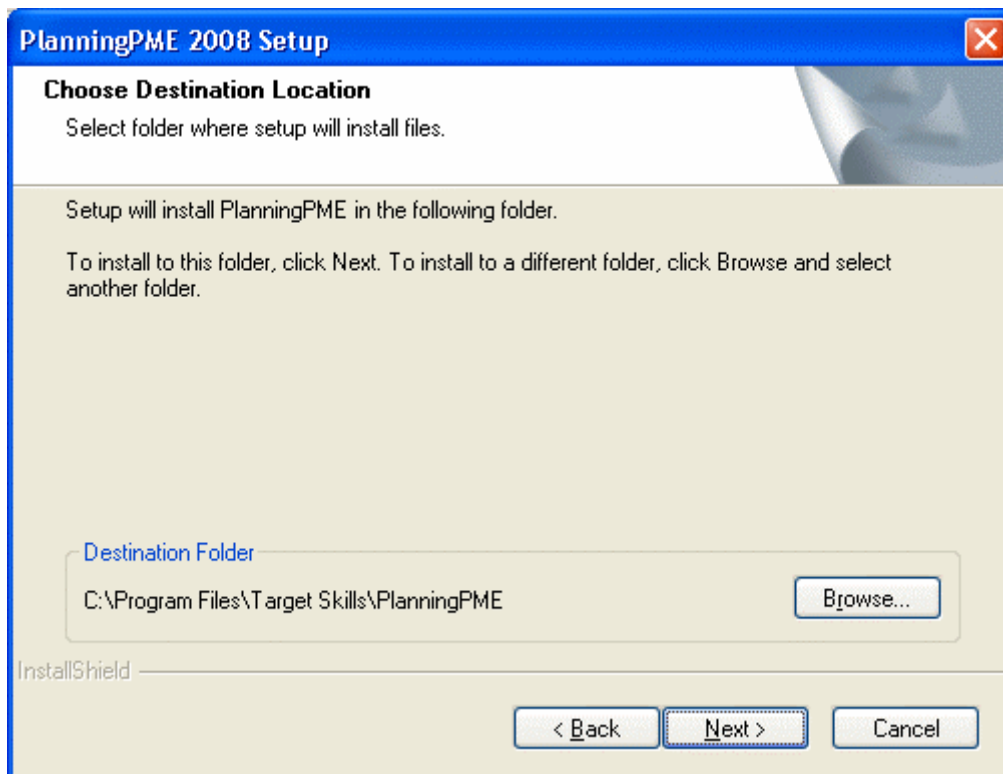
- 1- Select your language



Wait for the installation to complete and click on <Next>  
It takes only a few minutes.

2- Click on <Next>

3- Select the folder to save the program

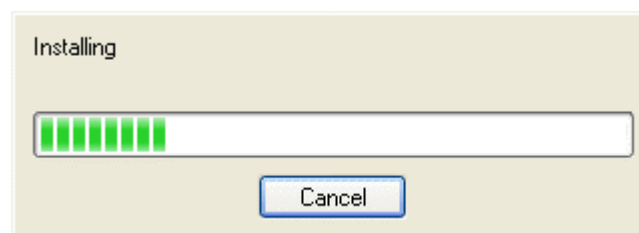


The program suggests to store PlanningPME in a default repertory (C -> Program Files -> Target Skills)

If you need to change the target directory, click on "Browse" and choose the folder where you wish to install PlanningPME.

Then click on <Next>

The installation only lasts a few seconds.



4- The installation is completed

Select <Yes> to restart your computer, <No> to restart it later.  
At last, click on <End>

PlanningPME is installed on your computer.  
By default, the database used is MS Access.

NB: It is not necessary to have MS Access installed on the computer to use PlanningPME.

## IV. Network installation on MS Access

The database (File .pp) must be saved on your server or on a shared folder for a networked use.

### 1- Location of the database

- Create a repertory PlanningPME on your server or a shared folder
- Share this repertory with Writing and reading access
- Copy the file « PlanningPME.pp » in this repertory.

### 2- Installation of the software:

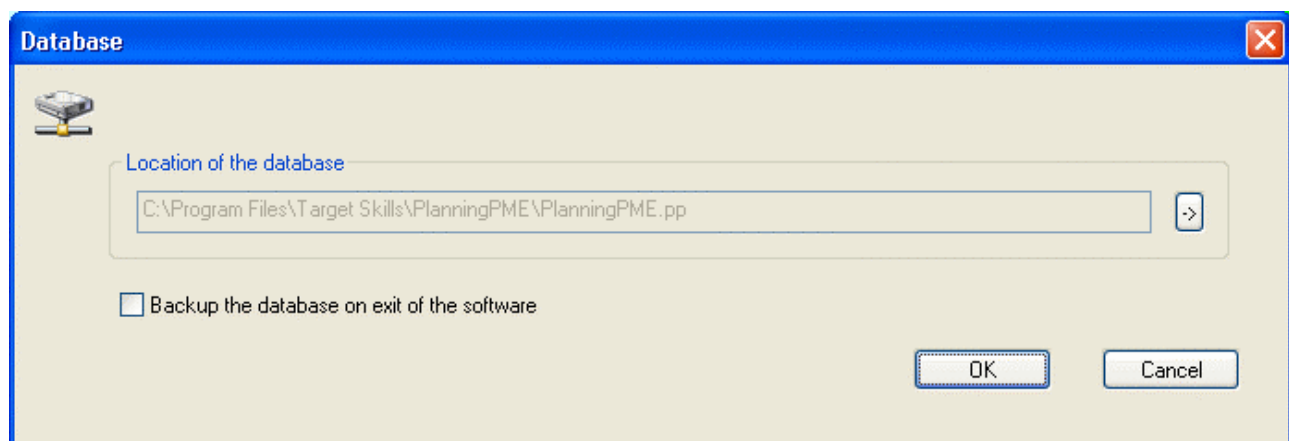
#### Two choices available:

- a) Install PlanningPME on the server and create a shortcut of the file PlanningPME.exe on each computer.
- b) Install PlanningPME on each computer.

Installing PlanningPME according to the 1<sup>st</sup> choice, installing the future updates\* will be much easier.

### 3- Indicate the location of the database on each computer

Go to the menu File -> Location and precise the location of the database: (File extension is ".pp" with the default name PlanningPME.pp)



*For reasons of performances, we advise you to map a network drive on the network path of the server and to precise this drive on the location of the database instead of the entire network path.  
Example: the network path is affected with letter P:*

\*With support contract

#### 4- Validate the locks

Go to "Tools" -> "Options" and select the "Network" tab.

Select the option "Network the program and control task modification by blocking simultaneous use" I will block a task while it is being used so that no one can modify it simultaneously.

## V. Installation on MS SQL Server

### Versions SQL-Server Compatible:

- 7.0,
- 2000,
- 2005,
- Express Edition

You can find on our website the installation scripts and a .reg file that will automatically update the Registry:

<http://www.planningpme.com/gb/SQL-Server.htm>

### Installation on the Server

- Create a new database PlanningPME
- Download and execute the following scripts in the database:
  - Creation of the tables: [table.sql](#)
  - Insertion in the database: [insert\\_gb.sql](#)
- Create or add user(s) that can have access to the database  
On SQL-Server 7.0: replace COLLATE and French\_CI\_AS by an empty string

### Installation on the Client workstation

The Client workstation must be accessed as administrator since informations will be stored in the registry.

- Execute the .reg file matching your SQL installation:
  - if your SQL uses an SQL authentication: execute **AUTHENTICATION SQL.REG**

You need to modify the string "Base" in the registry and precise the name or IP address of your server, the name of your database, the user and password.

```
"Provider=sqloledb;Data Source=Server;Initial Catalog=DataBase;User  
Id=User;Password=Password"
```

- If you use the Windows authentication for this database: execute **SSPI.REG**

Then, modify the string "Base" in the registry and precise the name or IP address of your server, the name of your database, the user and password.

```
"Base"="Provider=sqloledb;Data Source=Server;Initial Catalog=DataBase;Integrated Security=SSPI"
```

## VI. Installation on MySQL

### Versions MySQL compatible:

- 4.0, 4.1
- 5.0
- 

You can find on our website the installation scripts and a .reg file that will automatically update the Registry:

<http://www.planningpme.com/gb/MySQL.htm>

### Installation of the Server

- Download and install MySQL
- Download and execute the following scripts to create the database :
  - Creation of the tables: [table.sql](#)
  - Insertion in the database : [insert.sql](#)
- Create or add user(s) that can have access to the database

### Installation of the Client

- Install the connector ODBC MYSQL 3.51
- Execute MYSQL.REG

Then, modify the string "Base" in the registry and precise the name or IP address of your server, the name of your database, the user and password.

```
- "Base"="Provider=MSDASQL;DRIVER={MySQL ODBC 3.51  
Driver};Server=Server;Port=3306;Option=16384;Stmt=;Database=Database;Uid=user;Pwd=passwo  
rd"
```

## VII. Installation on Oracle

### Versions Oracle: 8i, 9i, 10i

You can find on our website the installation scripts and a .reg file that will automatically update the Registry:

<http://www.planningpme.com/qb/Oracle.htm>

### Installation of the Server

•Download and execute the following scripts to create the database:  
*In all the scripts, the string SCHEMA must be replaced by your schema*

- Creation of the tables: : [table.sql](#)
- Creation of the index: : [index.sql](#)
- Creation of the triggers: [trigger.sql](#)
- Insertion in the database : [insert.sql](#)
  
- Creation of the user who can have access to the database.

### Installation of the Client

- Install the Oracle driver
- Update TNSNAMES.ORA to add the database

```
PLANNING_SRV-TREST =
(DESCRIPTION =
  (ADDRESS_LIST =
    (ADDRESS = (PROTOCOL = TCP)(HOST = SRV-TEST)(PORT = 1521))
  )
(CONNECT_DATA =
  (SID = planning)
  (SERVER = DEDICATED)
)
)
```

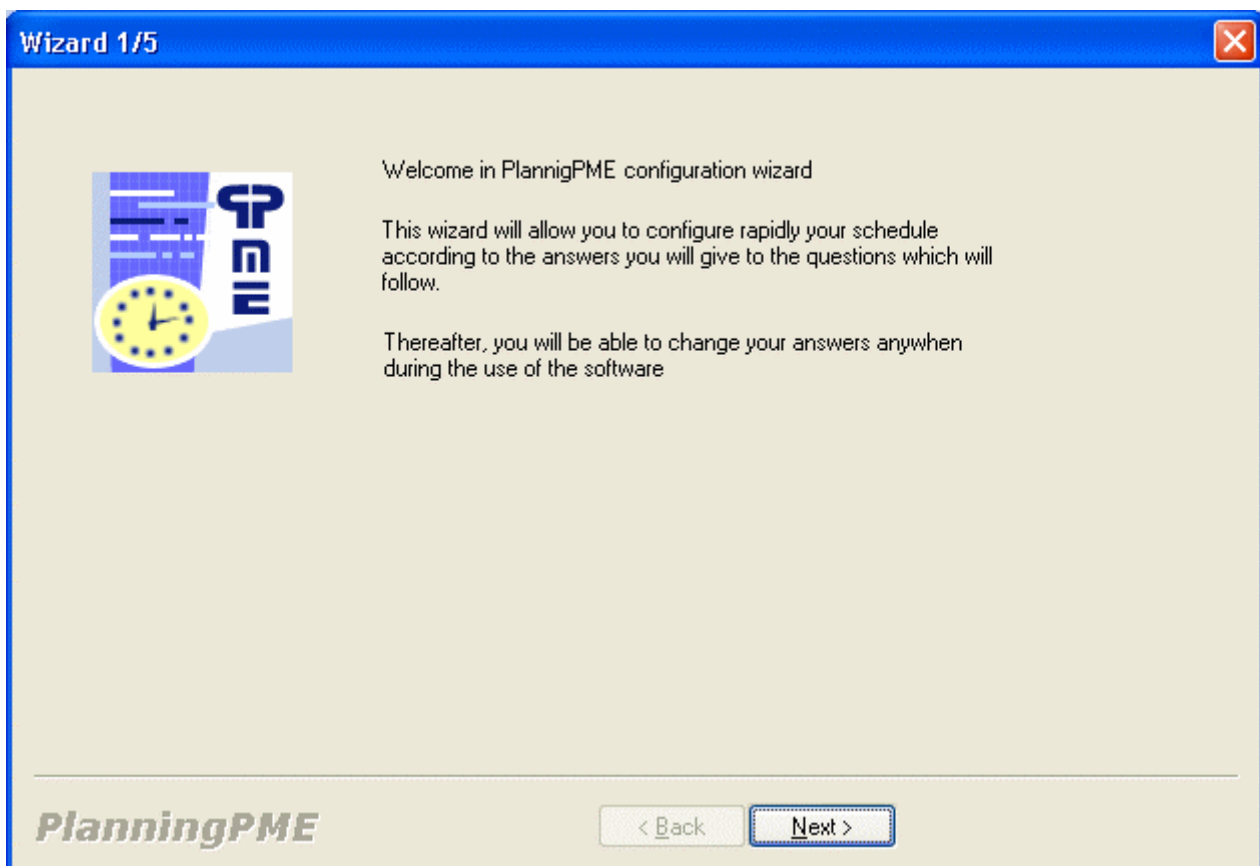
- Execute ORACLE.REG and then modify the string "Base" as well as the string "Schema"
- "Schema"= **[Name of the ORACLE Schema]**. (The punctuation mark is very important and needs to be showing in the value)
- "Base"="Driver={Oracle in OraHome92};DBQ=**Database** ;UID=**User** ;PWD=**Password**"

### VIII. Configuration of PlanningPME

Launch PlanningPME from the shortcut on your desktop.



To start implementing PlanningPME, the configuration wizard helps you. All the parameters can be changed later on the software.



## **IX. Back up of the planning**

MS Access:

You can activate the automatic save option from the menu File -> Location.

The option « Back up » allows you to save the database while closing PlanningPME; it copies the database as a file with this name: PLANNINGNAME\_<Date><Days>.pp and in the same repertory as your planning.

Other databases:

In most cases, your IT department should make regular back ups of your database.

## X. Contact

You are now ready to use PlanningPME.

We also invite you to visit our website: [www.planningpme.com](http://www.planningpme.com) to find out the complete products range.

Moreover, have a look at the complementary modules for an optimal management of your human and material resources.

For any information, do not hesitate to contact our commercial department

 : **+33 1 69 47 10 00**  
**or your Target Skills contact**

We thank you for your confidence and wish you a pleasant and effective use of your planning.