



PlanningPME
Schedule easily

Card n°18: Tasks dependencies

I. Description..... 2

II. How to activate this option? 2

II. How to create a link between your tasks? 2

III. Define a delay between the tasks 5

IV. Visualize the direct successors of a task 5

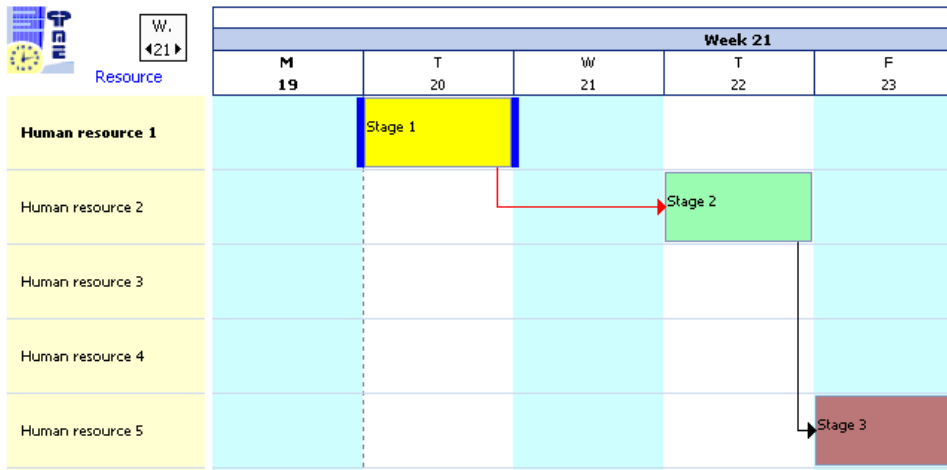
V. Shift tasks on the planning board 6

VI. To go further..... 7

I. Description

It is possible to manage tasks dependencies with PlanningPME and to precise a delay between each task.

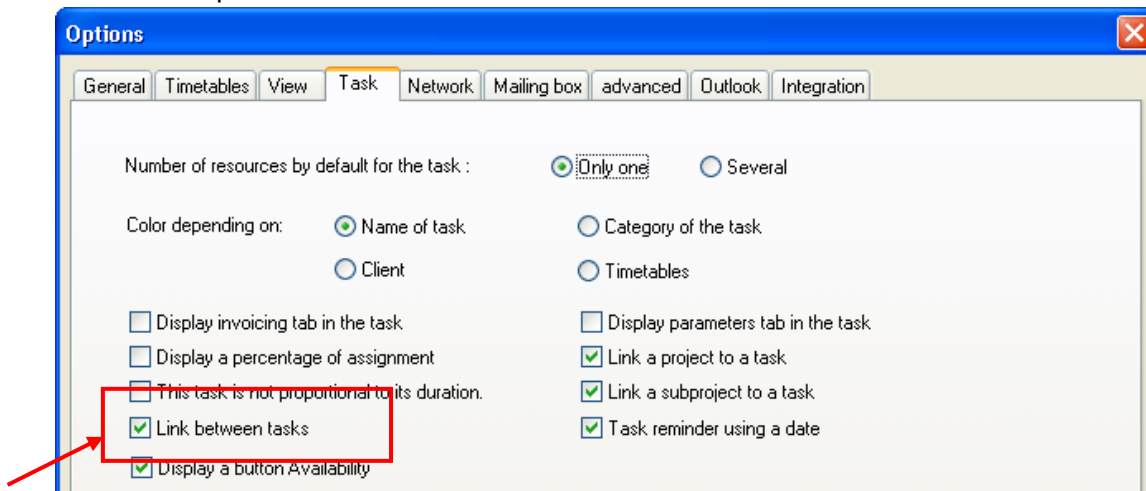
Visualisation on the planning:



When a task is shifted on the planning, the following linked tasks are shifted as well.

II. How to activate this option?

Option to activate in the menu Tools -> Options -> Task
Select the option "Link between tasks".

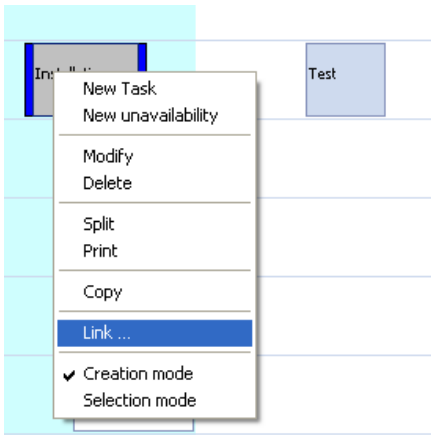


II. How to create a link between your tasks?

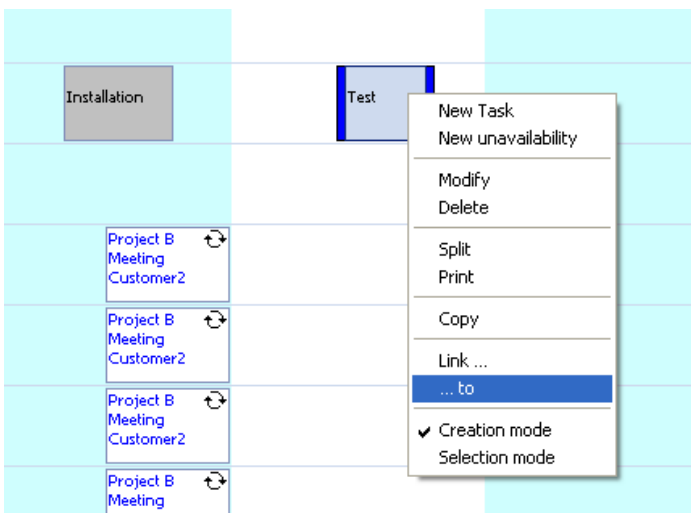
To link tasks, two possibilities:

II.1. First possibility: Right click on the tasks

Go to the first task, right click, select Link



Then, go to the second task and select ...to

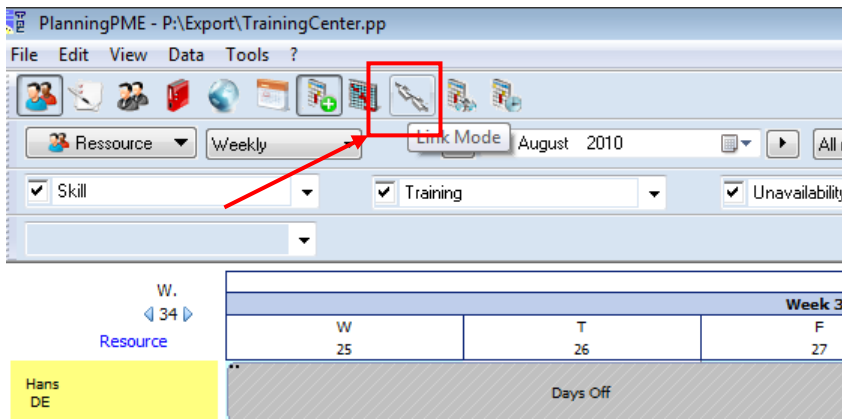


Results:

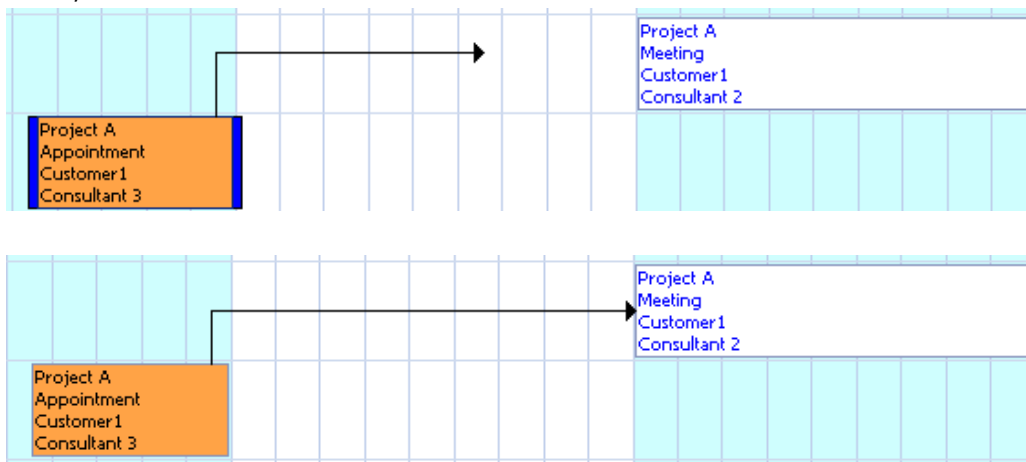


The black arrow shows that the tasks are linked.

II.2. Second possibility: Select the link icon at the top of the planning:



Then, click on the first task and then on the second task:

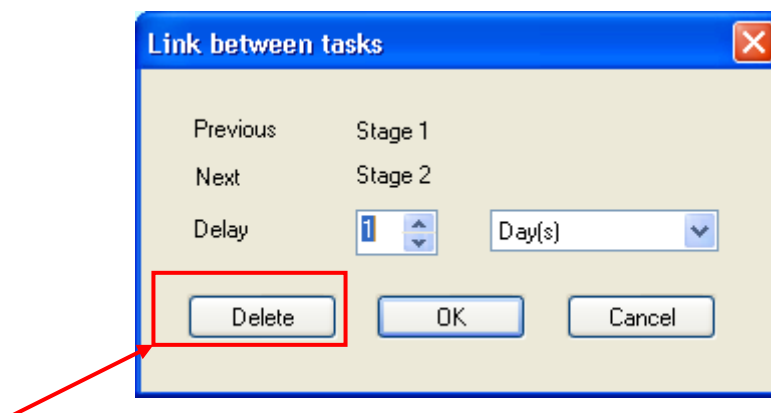


The black arrow shows that the tasks are linked.

To create a new link, you will need to select the arrow icon first and then, draw your link.

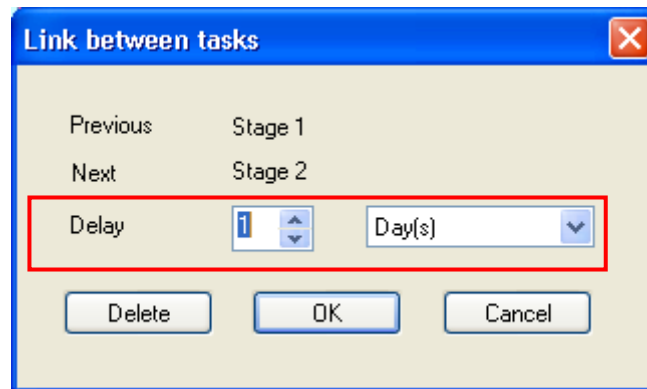
II.3. How to delete a link?

Click on the arrow directly and select delete:

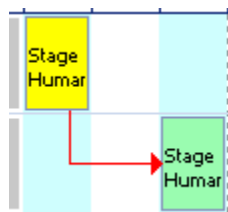


III. Define a delay between the tasks

You can also precise a delay between two tasks clicking on the arrow. This windows appears:

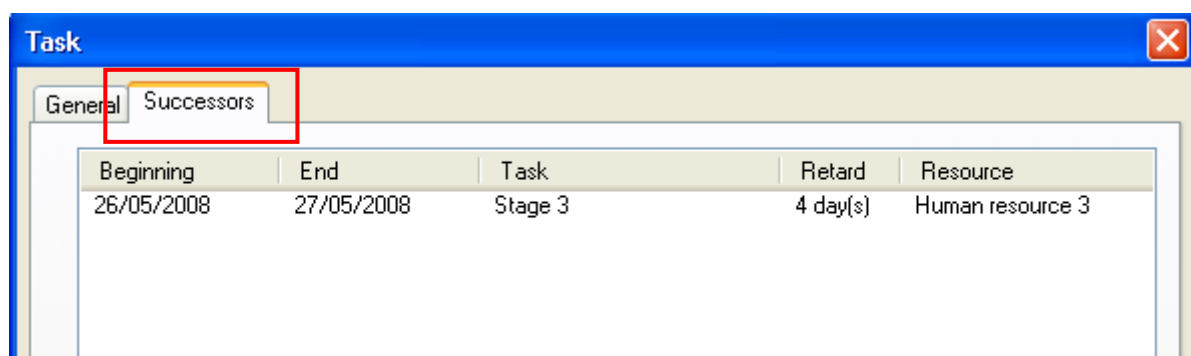


When a delay is specified, the arrow colour changes from black to red.



IV. Visualize the direct successors of a task

When you open a task, you now have a tab "Successors" that show you all the direct successors of a task:

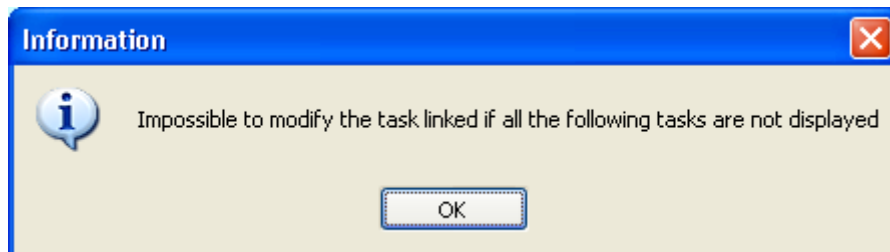


NB: You can not add or delete any links from here.

V. Shift tasks on the planning board

V.1. Rules while shifting a task

1 -> All the linked tasks must be displayed on the planning board before shifting a task otherwise you will have this message:



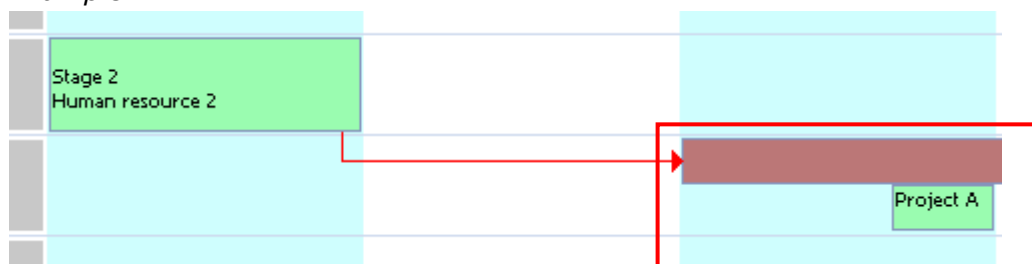
2 -> While shifting a task in the future, previous tasks are not shifted. Only successive tasks are shifted.

3 -> While shifting a task in the past, previous and next tasks are not shifted. If you shift a task in the past and you do not respect the delay specified with the previous task, the software will not let you shift it.

4 -> If a delay is specified, the delay is kept while shifting a task.

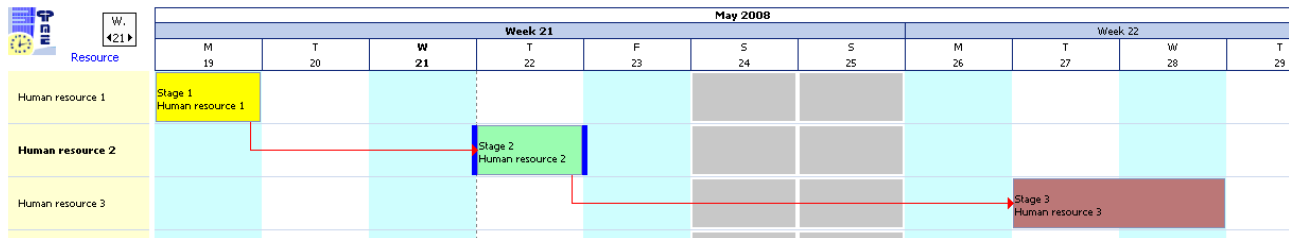
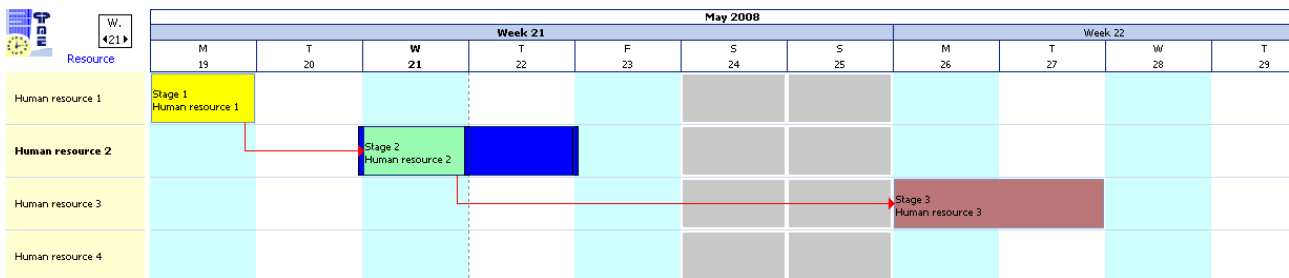
5 -> While shifting a task, there is no search for availability: if the resource already has a task assigned, there will be two tasks displayed for the same day.

Example:



6 -> While shifting a task, there is no search for availability: if the resource already has a task assigned, there will be two tasks displayed for the same day.

V.2. Example



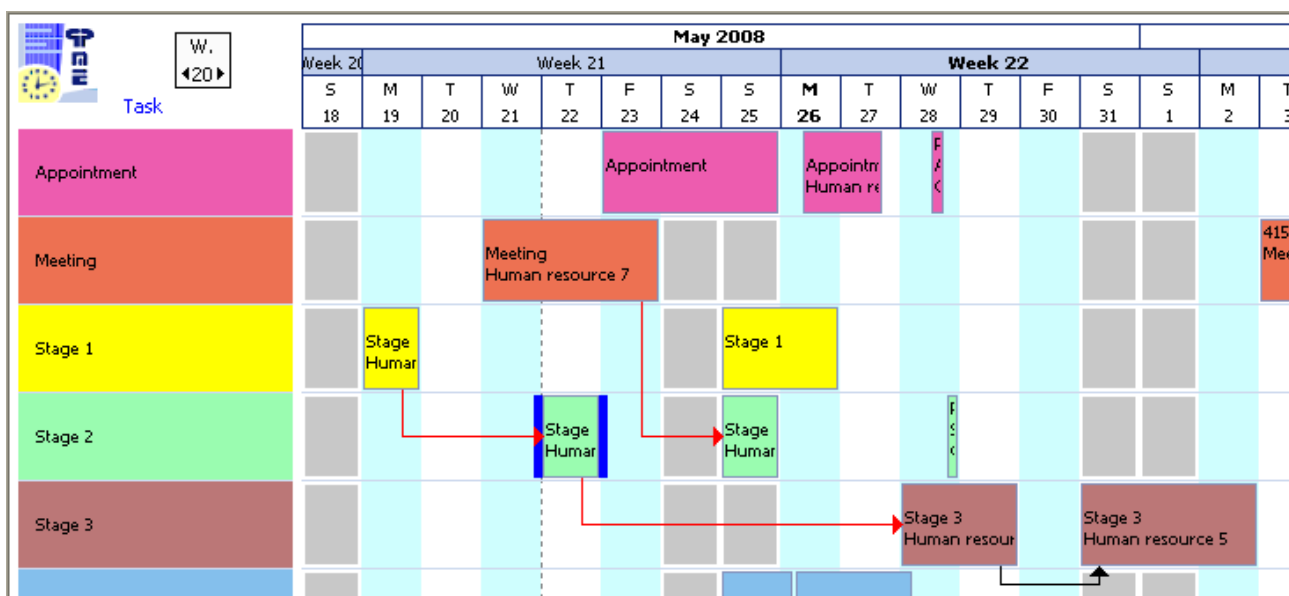
On the example above, when we shift the green task:

- The brown task is shifted as well as it is a successive task
- The yellow task do not move as it is a previous task

VI. To go further...

Note that the links can be created on all the different views: task, client or project view

Example: Task View



<http://www.planningpme.com>