

**PlanningPME**

Schedule easily

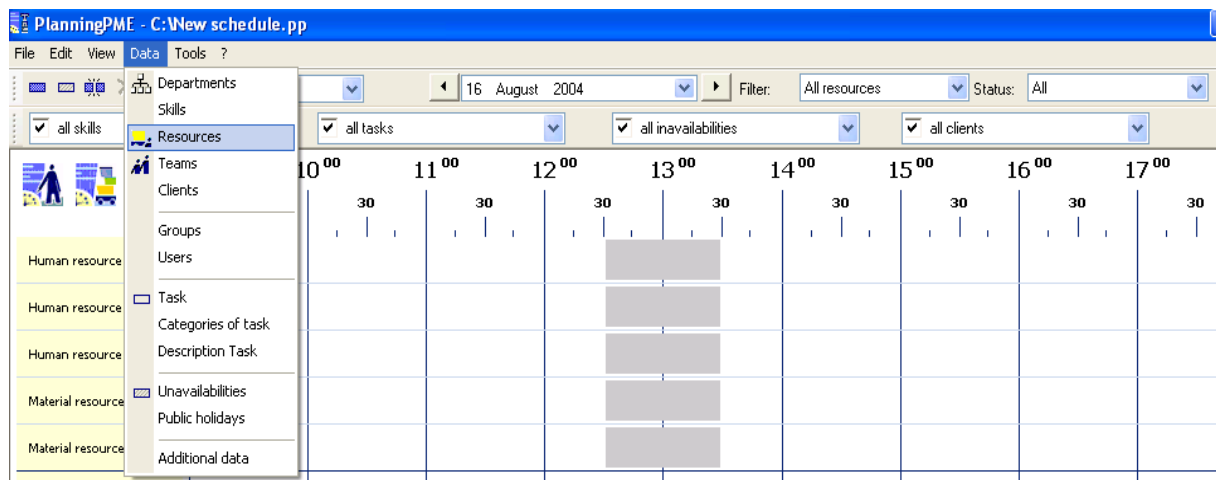
Create resources

I. Description of this feature

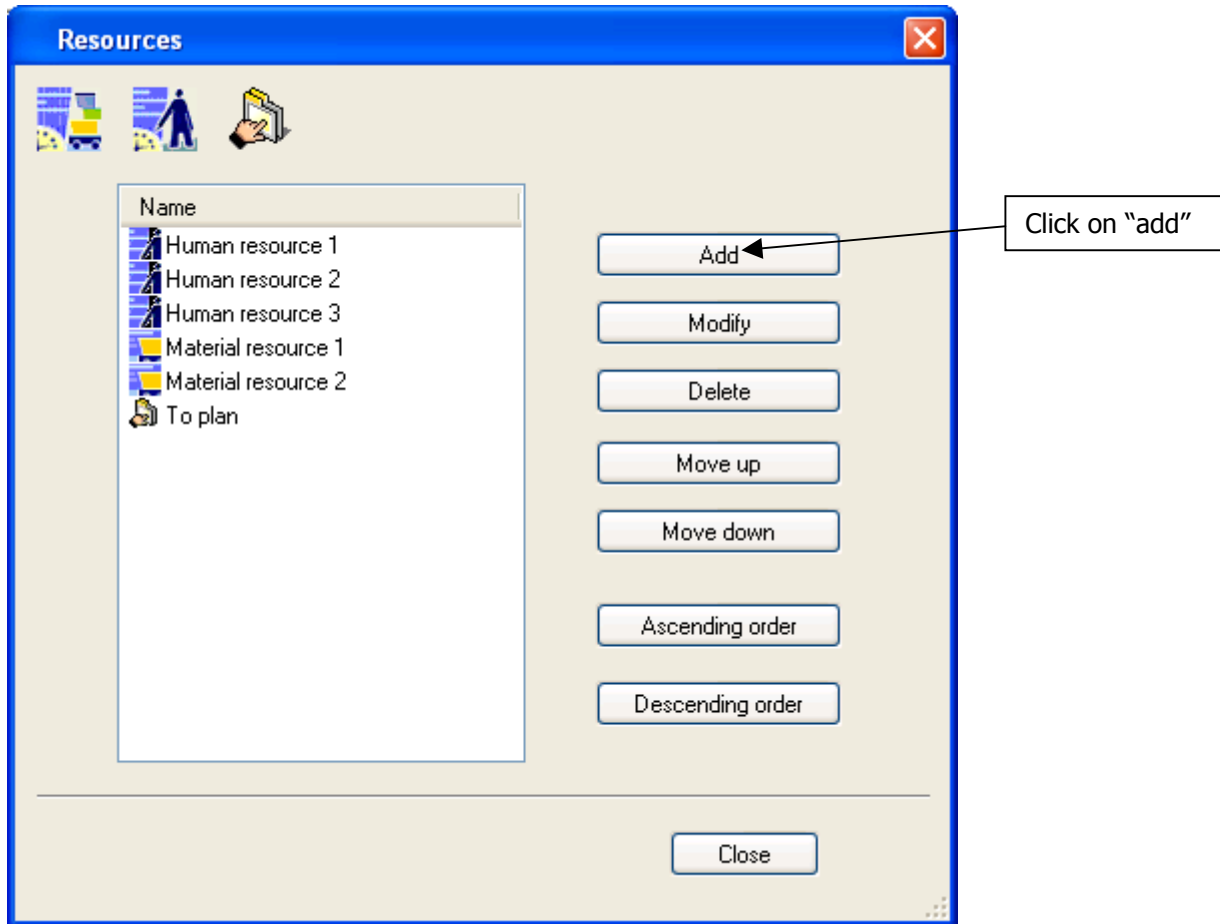
You have the possibility to add as many human and material resources as needed.

II. How to use this feature?

From PlanningPME, go to "Data" -> "Resources"



1. Resources window appears



You can add either a human resource (name of your employees, function of your employees...) or material resources (cars, rooms, equipment...).



2. "Resource" table appears

This is the personal status of this resource. You can add all the following information of your resource:

Resource

Information Slots Unavailabilities Skills

Type : Human Material To plan

Label :

Colors : Background : Text :

Service :

Coût €/H :

Name :

First name :

Address :

Zip code : City :

Phone : Mobile :

EMail :

Choose if it is a human or a material resource

Give a name to your resource

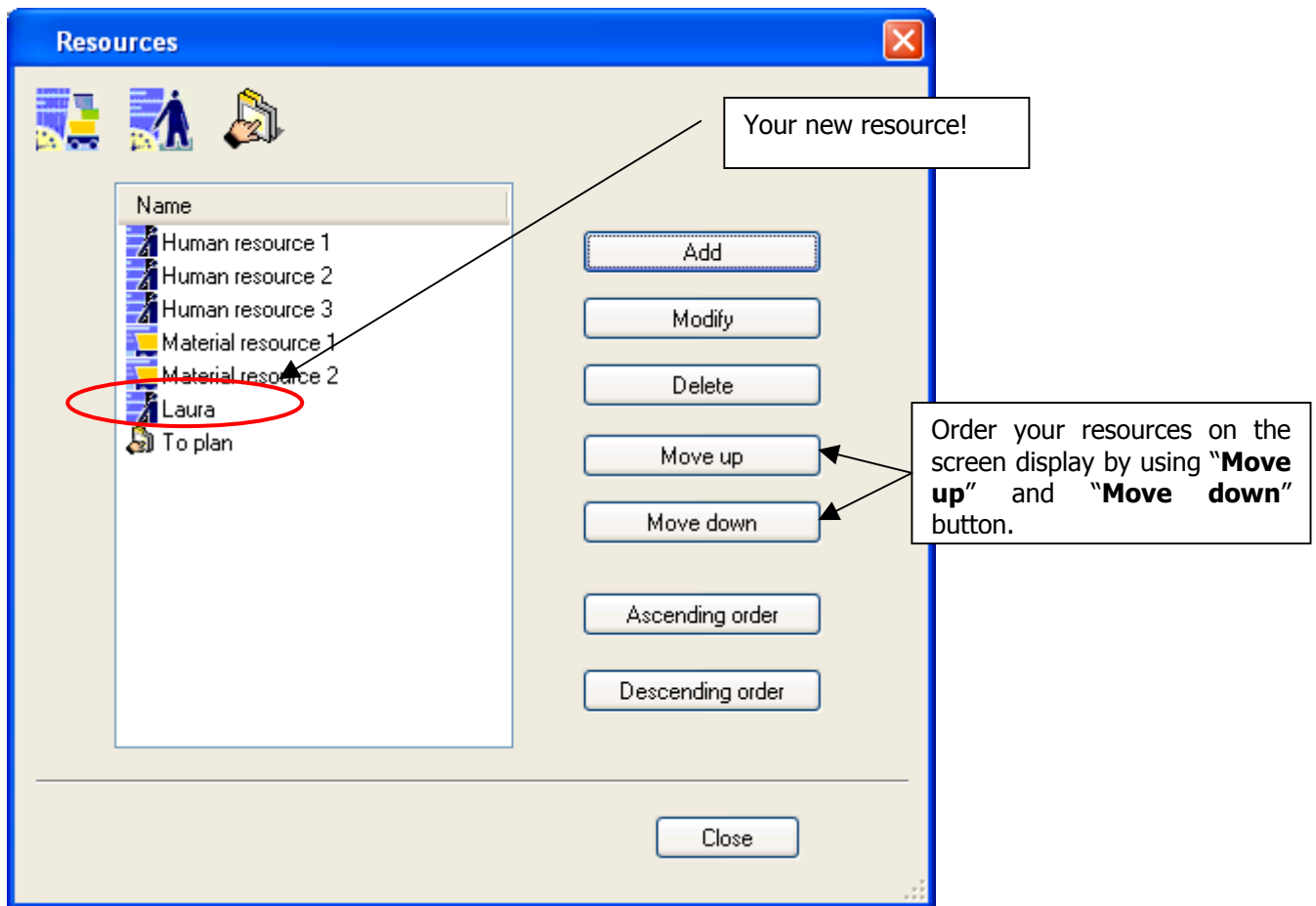
Choose a color for your resource

Affect the resource to a department if you desire

Add further information in the other fields if you need.

Click on « OK »

3. Your new resource appears in the resources window:



You can recognize if the resource created is human or material with the icon associated:



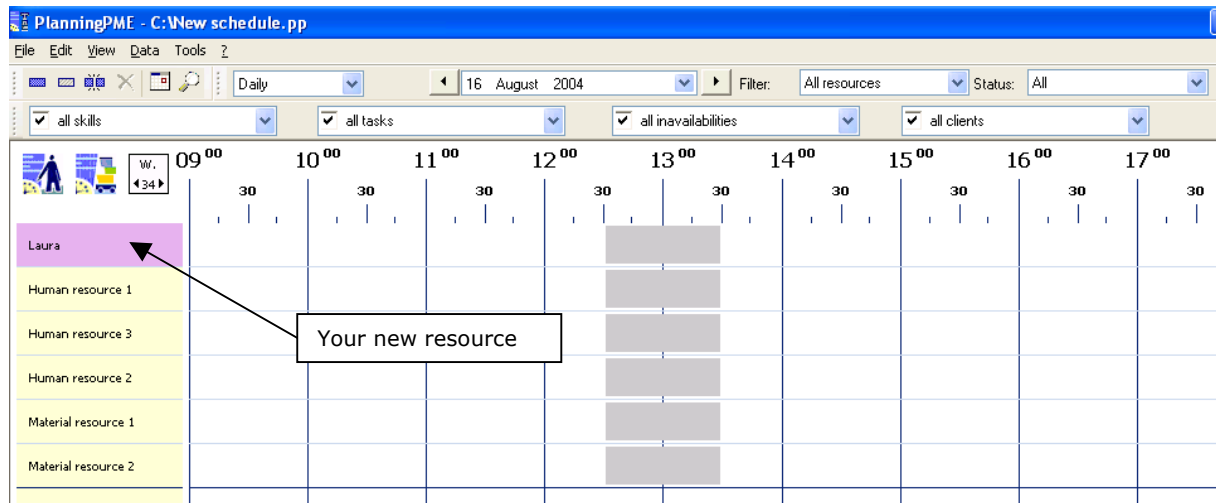
Human resource



Material resource



4. Your new resource appears on your schedule:



So, you can create as many human and material resources as you want in a very simple way.

IV. Contact PlanningPME

For any help or information about the software PlanningPME, the team of TARGET SKILLS is at your entire disposal.

PlanningPME

Schedule easily

<http://www.planningpme.net>

TARGET SKILLS

support@planningpme.com

Tél : +33 (0)1 69 44 00 49

Fax : +33 (0)1 69 44 03 49