



PlanningPME

Schedule easily

The software language

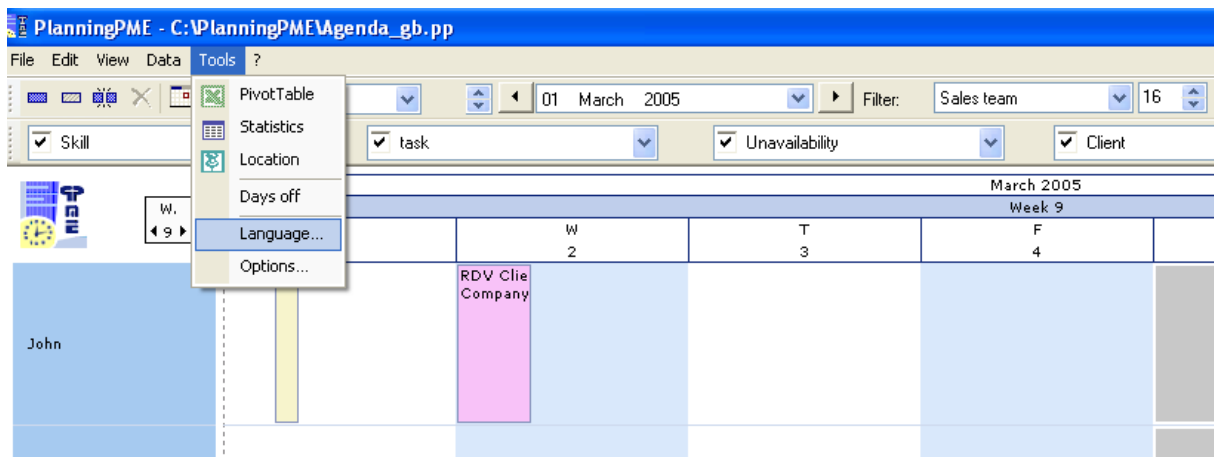
I. Description of this feature

You have access to several parameters such as:

- The language
- Monetary symbol
- Rename the fields: « Task », “Resource”, “Client”, “Project”
- Dates and hours format

II. How to use this feature?

From PlanningPME, go to the menu « Tools » -> « Language »



The following window appears.



Language and formats ✖

Language : Monetary symbol :

Task label: Number of decimal points

Project label Decimal separator:

Client label

Resource label

Department label

Hour

Format :

h : The one- or two-digit hour in 12-hour format.
 hh : The two-digit hour in 12-hour format. Single-digit values are preceded by a zero.
 H : The one- or two-digit hour in 24-hour format.
 HH : The two-digit hour in 24-hour format. Single-digit values are preceded by a zero.
 m : The one- or two-digit minute.
 mm : The two-digit minute. Single-digit values are preceded by a zero.
 t : The one-letter AM/PM abbreviation; that is, AM is displayed as A.
 tt : The two-letter AM/PM abbreviation; that is, AM is displayed as AM.

Date

Short format : Long format :

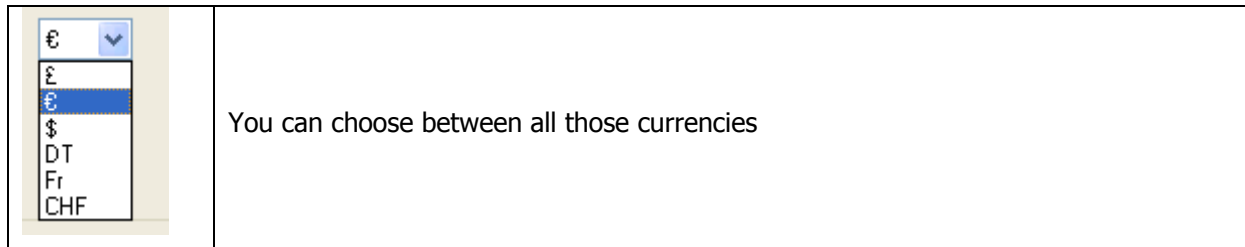
d : The one- or two-digit day.
 dd : The two-digit day. Single-digit day values are preceded by a zero.
 ddd : The three-character weekday abbreviation
 dddd : The full weekday name.
 M : The one- or two-digit month number.
 MM : The two-digit month number. Single-digit values are preceded by a zero.
 MMM : The three-character month abbreviation.
 MMMM : The full month name.
 y : The year is displayed as the last two digits, but with no leading zero for years less than 10.
 yy : The last two digits of the year.
 yyyy : The full year.



1 – Choice of the language

The software PlanningPME is available in : French, English, German, Spanish, Swedish, Portuguese, Italian or Dutch.

2 – Monetary symbol

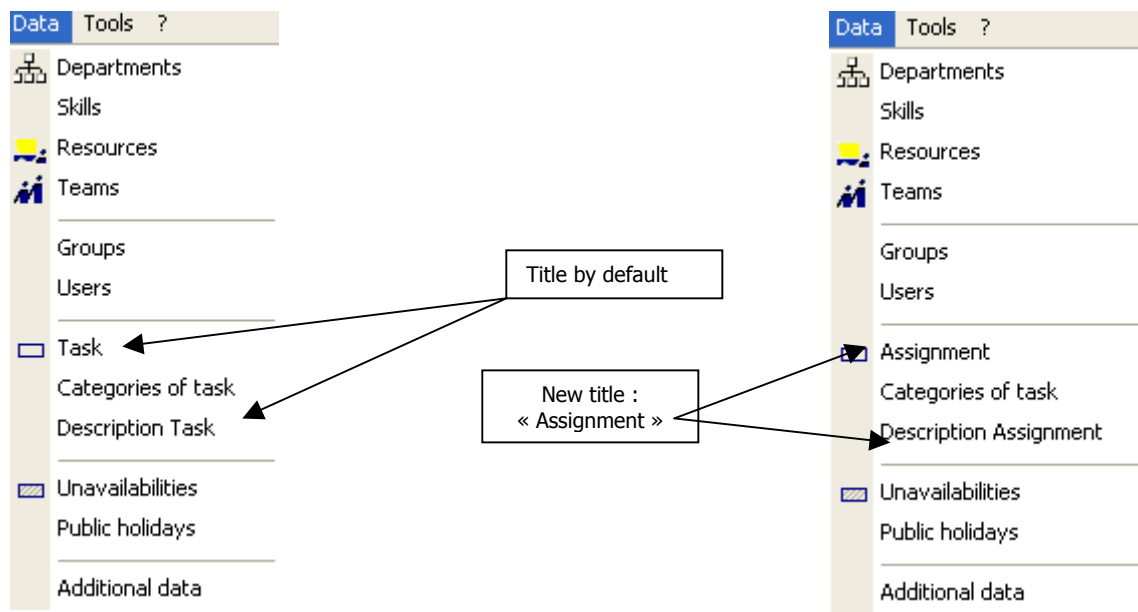


3 – Task label

By default, the task label is « new task ». You can customize this label depending on your activity: assignment, site...

In the example below, the task was named "assignment".

In the « Data » menu, you will read « assignment » instead of « task ».

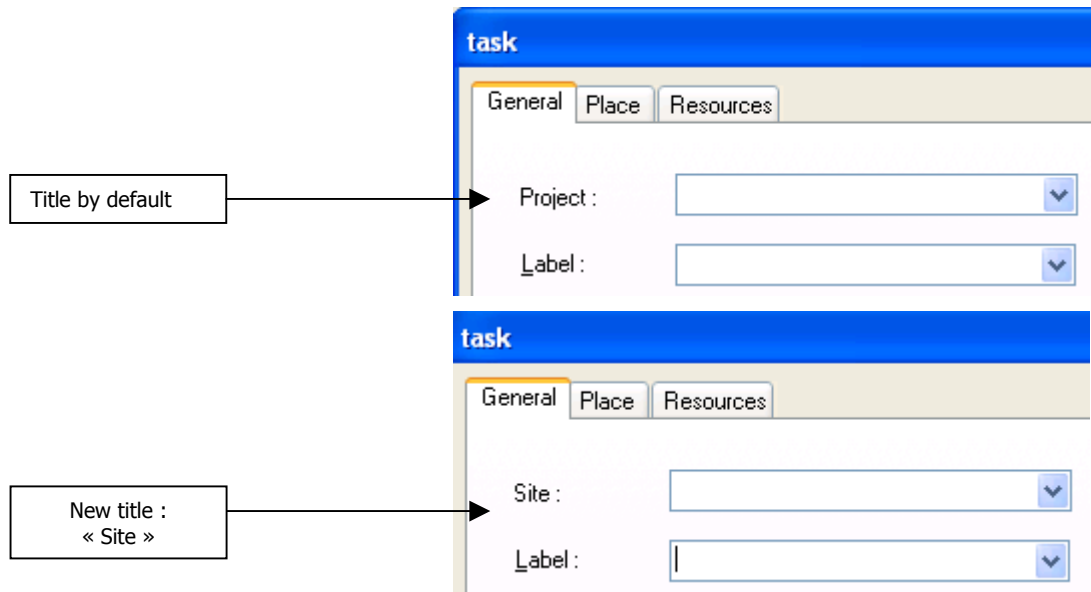


4- Project title

You can assign a project to a task.

By default, the project title is "project". You can also customize this title depending on your activity: Site ...

On the example below, the project was renamed « Site ».

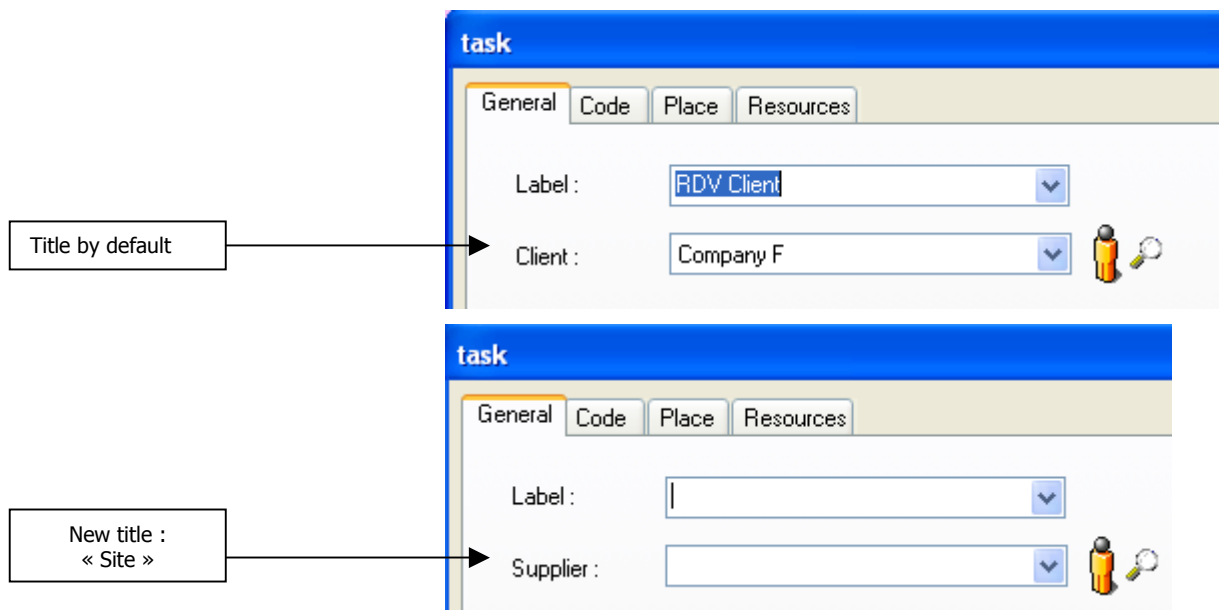


5- Client title

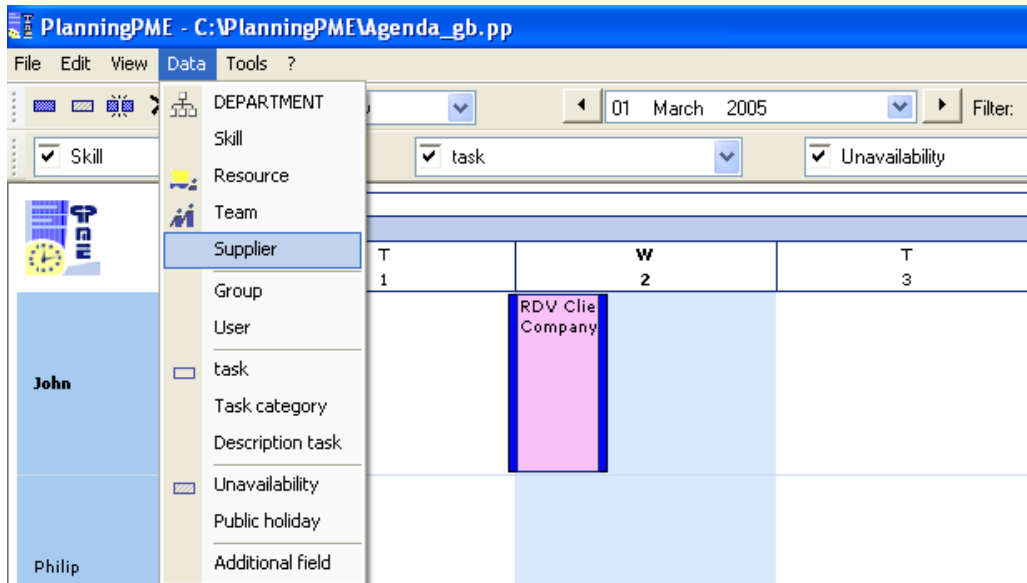
You can assign a client to a task.

By default, the label is "client". You can also customize this title depending on your activity: Site ...

On the example below, the client was renamed « Supplier».

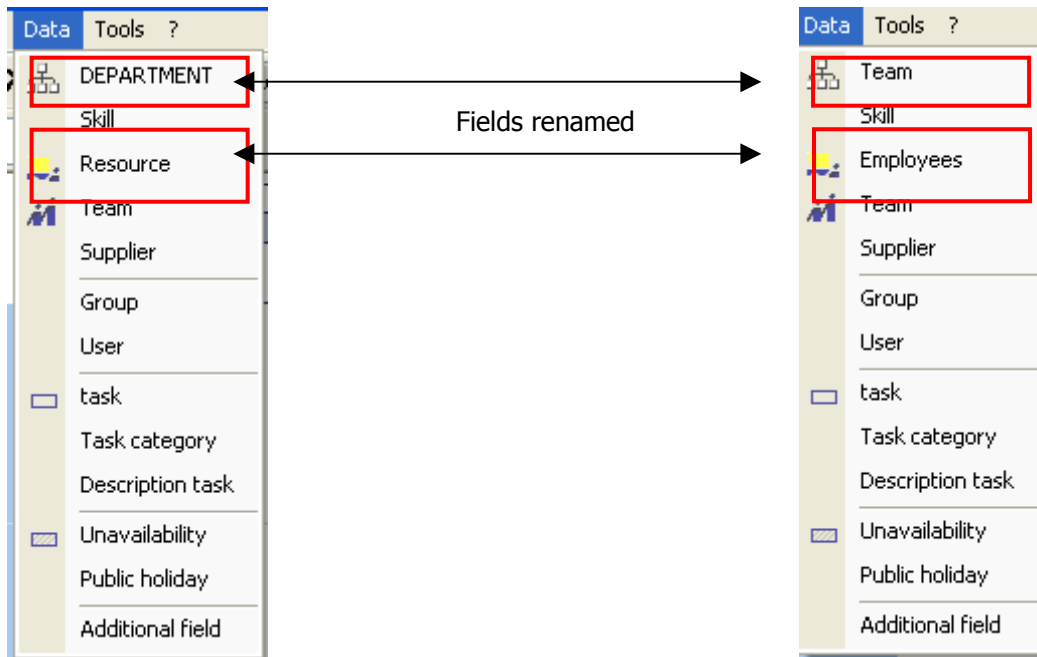


And in the Menu Data , the field is now changed as "Supplier" instead of "Client".



5- Services and Resource renamed

It is the same principle as for the label "task", "project" or "client".





6 – Hours format

Hour

Format :

h : The one-digit hour. Single-digit values are preceded by a zero.
 hh : The two-digit hour in 24-hour format. Single-digit values are preceded by a zero.
 H : The one-digit hour. Single-digit values are preceded by a zero.
 HH : The two-digit hour in 24-hour format. Single-digit values are preceded by a zero.
 m : The one- or two-digit minute.
 mm : The two-digit minute. Single-digit values are preceded by a zero.
 t : The one-letter AM/PM abbreviation; that is, AM is displayed as A.
 tt : The two-letter AM/PM abbreviation; that is, AM is displayed as AM.

You can choose between those different hours formats.

6 – Dates format

Date

Short format : Long format :

d : The one- or two-digit day.
 dd : The two-digit day. Single-digit values are preceded by a zero.
 ddd : The three-character day name.
 dddd : The full weekday name.
 M : The one- or two-digit month.
 MM : The two-digit month. Single-digit values are preceded by a zero.
 MMM : The three-character month name.
 MMMM : The full month name.
 y : The year is displayed as the last two digits, but with no leading zero for years less than 10.
 yy : The last two digits of the year.
 yyyy : The full year.

You can choose between those different date formats.

So, you have access to several interesting parameters.

III. Contact PlanningPME

For any help or information about the software PlanningPME, the team of TARGET SKILLS is at your entire disposal.

PlanningPME

Schedule easily

<http://www.planningpme.net>

TARGET SKILLS

support@planningpme.com

Tél : +33 (0)1 69 44 00 49

Fax : +33 (0)1 69 44 03 49